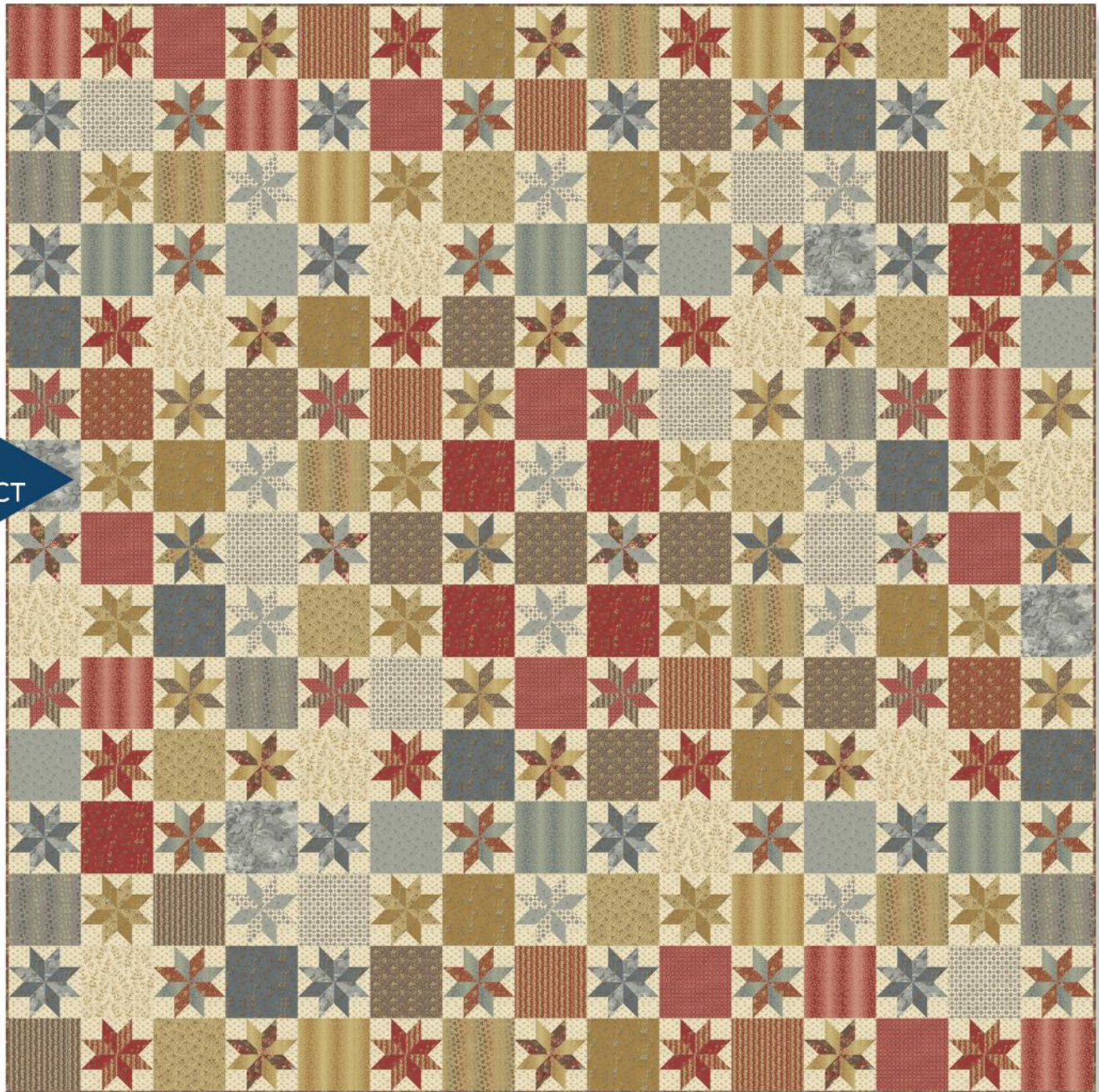


Lemoyne Star

Designed by Wendy Sheppard

Featuring Larisa by Mary Koval

SIZE: 90" x 90"



FREE
PROJECT

THIS IS A DIGITAL REPRESENTATION OF THE QUILT TOP, FABRIC MAY VARY.

PLEASE NOTE: BEFORE MAKING YOUR PROJECT, CHECK FOR ANY PATTERN UPDATES AT WINDHAMFABRICS.COM'S FREE PROJECTS SECTION.



Lemoyne Star

KEY	FABRIC	SKU	YD	CUTTING INSTRUCTIONS
A		50066-1	5/8	(1) 6-1/2" x WOF strip. Subcut (4) 6-1/2" squares. (64) #3 pieces using provided template.
B		50067-2	1	(10) 2-1/4" x WOF strips for binding (64) #3 pieces using provided template.
C		50068-1	7/8	(2) 6-1/2" x WOF strips. Subcut (8) 6-1/2" squares. (80) #3 pieces using provided template.
D		50068-4	3/4	(2) 6-1/2" x WOF strips. Subcut (8) 6-1/2" squares. (64) #3 pieces using provided template.
E		50068-5	5/8	(1) 6-1/2" x WOF strip. Subcut (6) 6-1/2" squares. (64) #3 pieces using provided template.
F		50069-1	1/4	(1) 6-1/2" x WOF strip. Subcut (6) 6-1/2" squares.
G		50069-6	3/8	(1) 6-1/2" x WOF strip. Subcut (6) 6-1/2" squares. (16) #3 pieces using provided template.
H		50070-1	5/8	(1) 6-1/2" x WOF strip. Subcut (4) 6-1/2" squares. (64) #3 pieces using provided template.
I		50070-4	3/4	(1) 6-1/2" x WOF strip. Subcut (4) 6-1/2" squares. (80) #3 pieces using provided template.
J		50070-5	1/4	(1) 6-1/2" x WOF strip. Subcut (6) 6-1/2" squares.
K		50071-1	5/8	(1) 6-1/2" x WOF strip. Subcut (6) 6-1/2" squares. (64) #3 pieces using provided template.
L		50071-6	3/4	(2) 6-1/2" x WOF strips. Subcut (8) 6-1/2" squares. (64) #3 pieces using provided template.
M		50072-1	3/4	(2) 6-1/2" x WOF strips. Subcut (8) 6-1/2" squares. (48) #3 piece using provided template.
N		50072-5	5/8	(2) 6-1/2" x WOF strips. Subcut (8) 6-1/2" squares. (32) #3 pieces using provided template.
O		50073-4	1/2	(2) 6-1/2" x WOF strips. Subcut (10) 6-1/2" squares.
P		50074-1	4-1/4	(896) #1 and (896) #2 pieces using provided templates.



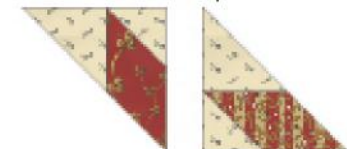
Lemoyne Star

Q		50075-2	5/8	(2) 6-1/2" x WOF strips. Subcut (9) 6-1/2" squares. (32) #3 pieces using provided template.
R		50075-5	5/8	(1) 6-1/2" x WOF strip. Subcut (2) 6-1/2" squares. (64) #3 pieces using provided template.
S		50076-2	5/8	(1) 6-1/2" x WOF strip. Subcut (4) 6-1/2" squares. (32) #3 pieces using provided template.
T		50076-5	5/8	(1) 6-1/2" x WOF strip. Subcut (6) 6-1/2" squares. (64) #3 pieces using provided template.
		Backing	9	
				96" x 96" piece of batting

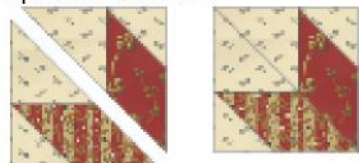
Note: Trace templates onto clear plastic template material and cut out. Use templates to cut out indicated number of pieces from each fabric.

Constructing Star Blocks

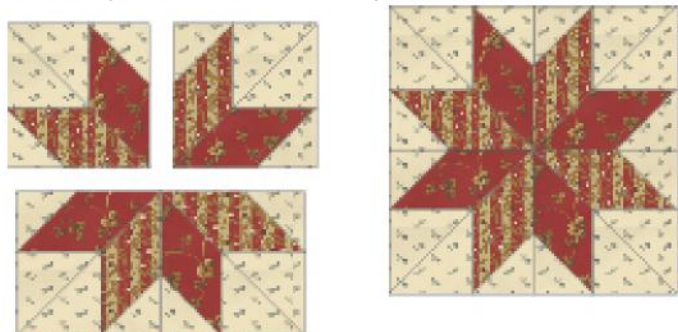
1. Sew (1) **P** #1 and (1) **P** #2 pieces to the (1) **E** #3 piece to make an eighth of a block. Repeat to make a total of (4) **E/P** eighths. In the same way, make (4) **T/P** eighths noting reverse orientation of the #1 and #2 pieces.



2. Sew (1) **E/P** eighth to (1) **T/P** eighth to make a quarter block measuring 3-1/2" square. Make (4) quarter blocks.



3. Lay out (4) quarter blocks into (2) rows of (2) quarter blocks each. Sew into rows and join the rows to complete the 6-1/2" square block.





Lemoyne Star

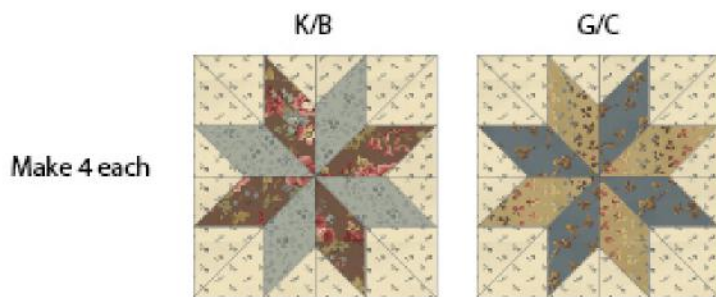
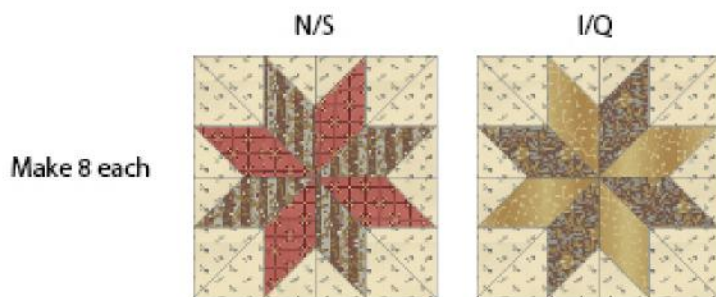
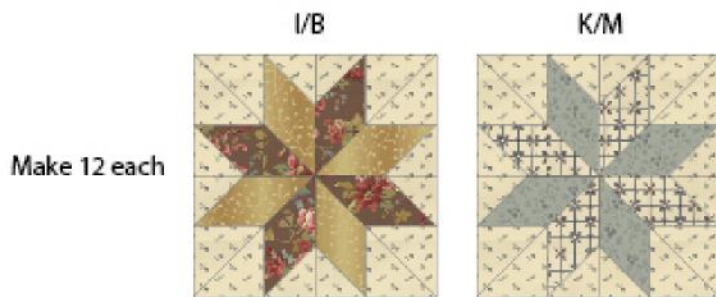
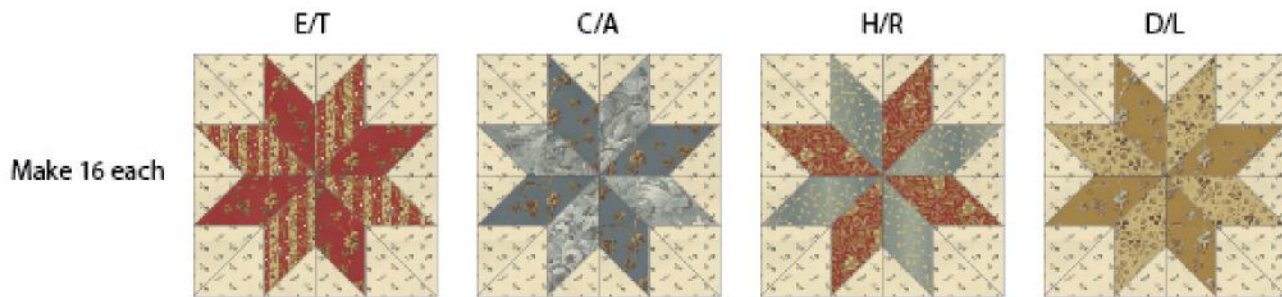
4. Make the number of blocks indicated for each fabric combination, always using Fabric **P** for piece #1 and #2.

16 blocks each: **E/T, C/A, H/R, D/L**

12 blocks each: **I/B, K/M**

8 blocks each: **N/S, I/Q**

4 blocks each: **K/B, G/C**





Lemoyne Star

Quilt Top Assembly

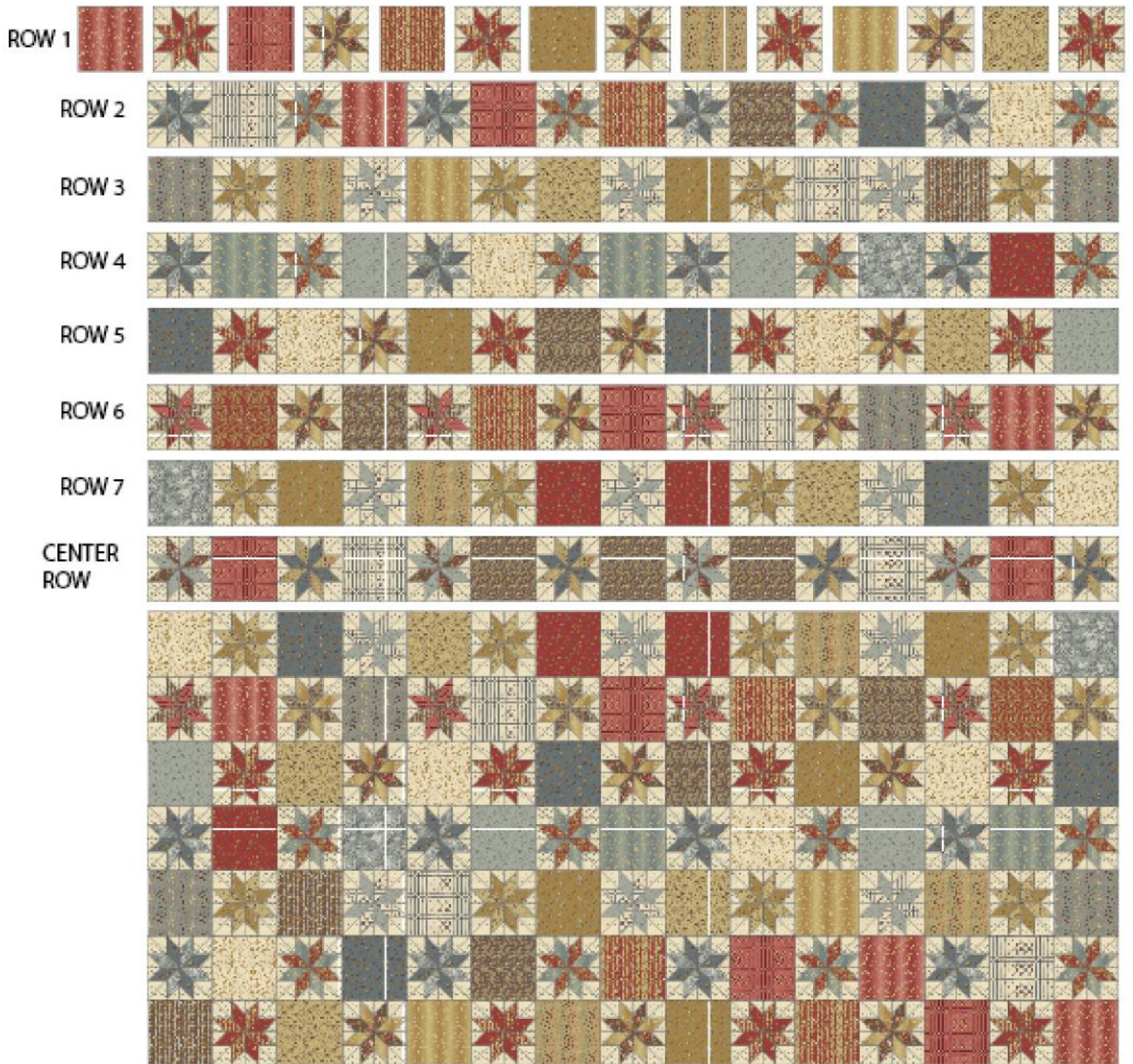
5. Referring to the Quilt Assembly Diagram for placement, lay out the star blocks and assorted 6-1/2" squares into (7) rows of (15) blocks/squares each to make the first (7) rows of the quilt. Sew the blocks/squares into rows and join the rows to make the top quilt half. Repeat to make the bottom quilt half (Rotate it 180 degrees).
6. Use the remaining (8) star blocks and (7) 6-1/2" assorted squares to make the center row.
7. Sew the top and bottom quilt halves to opposite sides of the center row to complete the quilt top.

Finishing

8. With the backing fabric laying taut, layer with batting and the quilt top to form a quilt sandwich. Baste and then quilt as desired.
9. Use the (10) **B** 2-1/4" x WOF strips to bind the quilt.



Lemoyne Star



TEMPLATES SHOWN AT
100%.
Cut on thinner outer line.

